

## Patient Safety Report

This Patient Safety Report shows information up to the end of **May 2010**. The full report was submitted to the Patient Safety Committee on 7<sup>th</sup> July 2010 who identified the key issues for reporting to the Board.

<b>1. Mortality</b>	Trustwide mortality shows a minimal increase from 60 in April to 62 in May. Overall we remain below the Peer average.	<b>G</b>
---------------------	---	----------

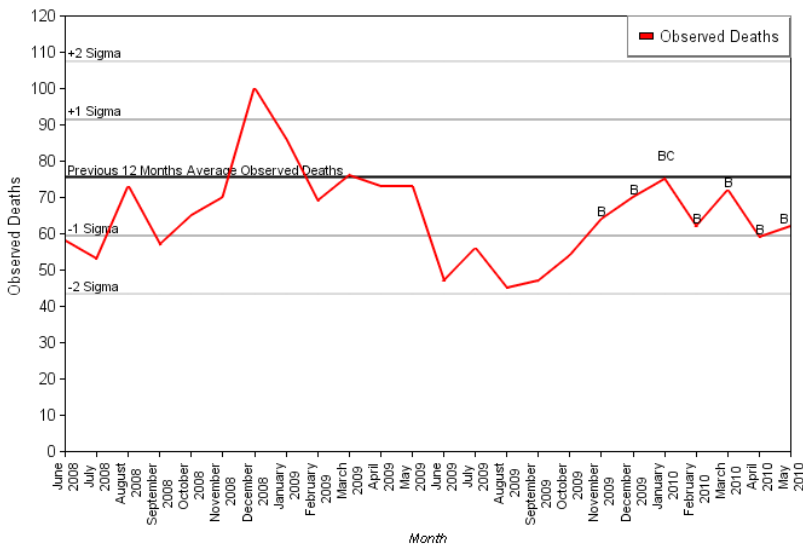
### 1.1 Risk Adjusted Mortality rate

<b>May-2010</b>	Trust	Peer	
Risk Adjusted Mortality	77	81	

**HSMR (Dr Foster) : 101.87 Overall mortality rate for 1 year**

### 1.2 Risk Adjusted Mortality Trends: Trustwide

Mortality Trending



#### Special Cause Flags

- A: Value beyond 2 sigma
- B: 8 consecutive values one side of the average.
- C: 6 consecutive values trend in one direction
- D: 4 of 5 beyond 1 sigma

Review of mortality trends at specialty level shows a continued rise in the rates for Medicine and Care of the Elderly. Trends reversed in Cardiology and Respiratory Medicine in December. A case review of deaths is continuing

<b>2. Incident Reporting</b>	Reporting of patient incidents showed an increase from April (203 to 264). There were 2 major harm events (DATIX ID 32035 where a patient bled post oesophageal dilation for palliative treatment and died. DATIX ID: 31986 where staff failed to rescue a deteriorating patient. The latter incident remains under investigation).	<b>A</b>
------------------------------	---	----------

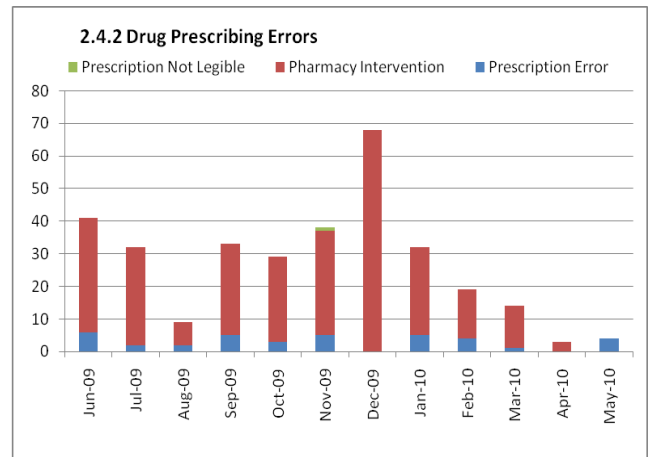
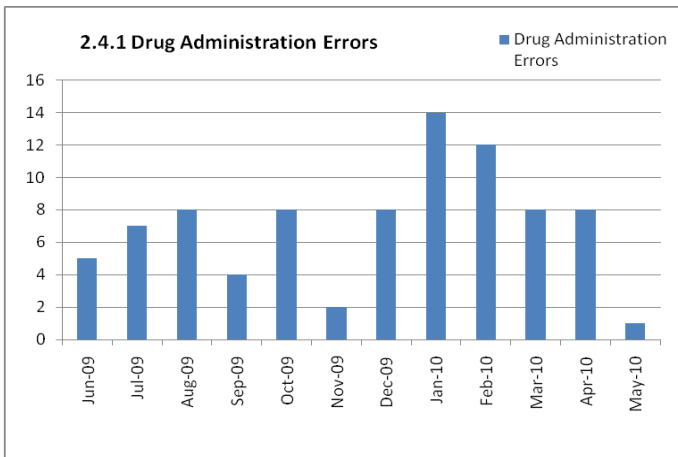
<b>2.1 Serious Incidents (SI)</b>	May 2010 – 2 Serious Incidents reported. One related to diagnostic procedure and the other was a perinatal infection affecting a newborn.	<b>A</b>	
	Total Open SUI incidents		13
	Overdue SUI final reports at July 201		3

<b>2.2 Never Events</b>	May 2010 – No Never Events reported.	<b>G</b>
-------------------------	--------------------------------------	----------

## 2.4 Safer Medication

May 2010 – Error rate for both Drug administration and prescribing is low. However, this is due in part to under reporting of Pharmacy interventions onto DATIX. Pharmacists are to be trained how to report onto DATIX in July.

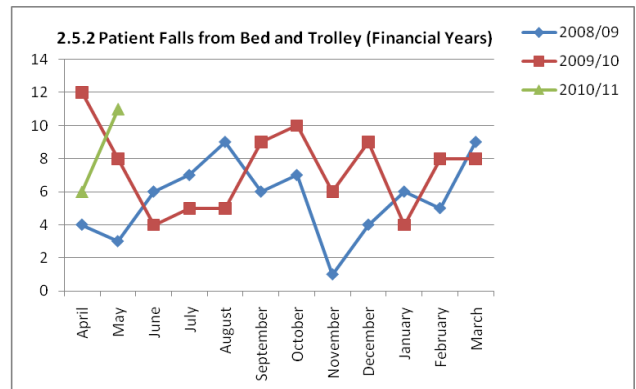
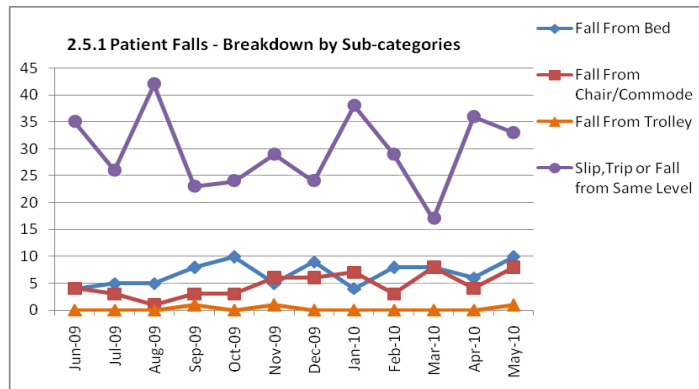
G



## 2.5 Patient Falls

The number of falls has increased in all areas. Whether this is due to an increased reporting culture is unclear at present until the root cause analysis have been completed.

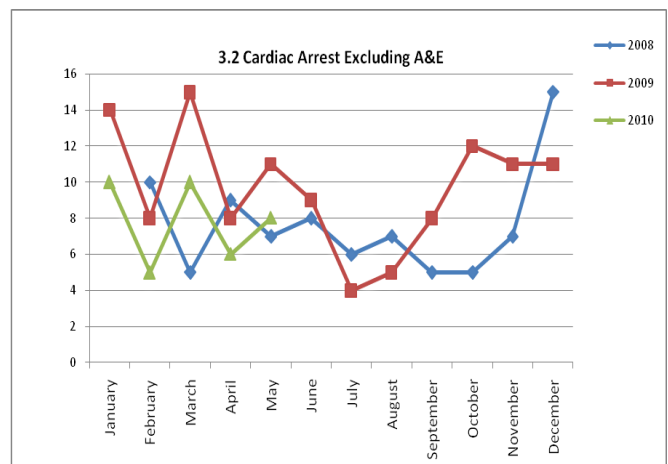
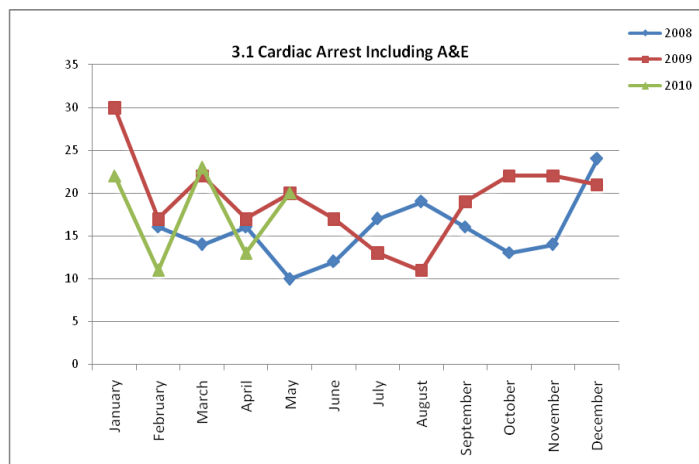
A



## 3. Cardiac Arrests

The number of in hospital cardiac arrests has increased this month by 2 (from 6 to 8).

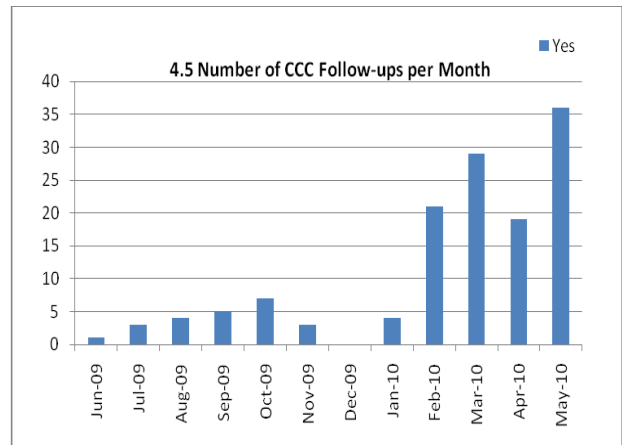
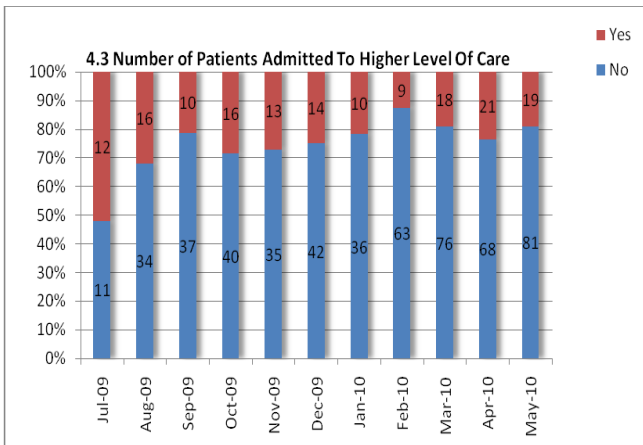
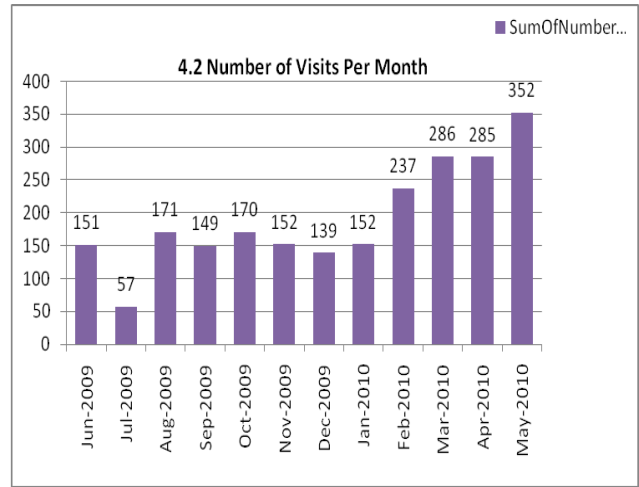
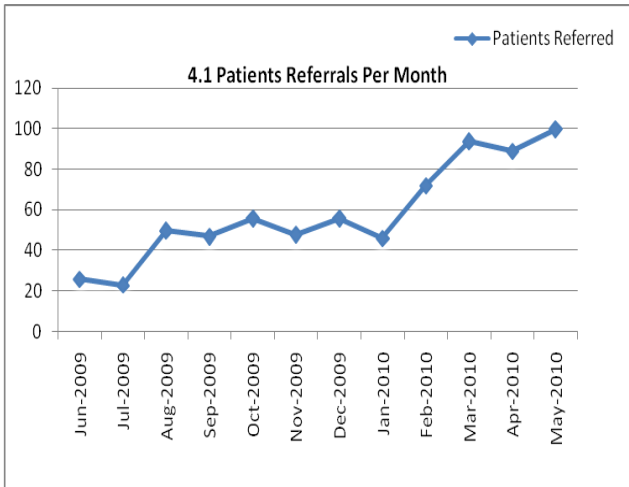
A



**4. Outreach Data  
Patients At Risk (PAR)**

During May 2010, there were 100 patient referrals to the Critical Care Outreach Team. These 100 patients were visited 352 times. 19 of these patients required admission to a higher level of care.

**G**



**5. Pressure Ulcers**

6 Hospital acquired pressure ulcers were reported in May. There were no Grade 3 or 4 ulcers. Agreement now reached with SHA and PCT that all grade 3 and 4 ulcers are reportable as both SIs and SOVAs.

**A**

