

Activity & Performance December (cumulative)*

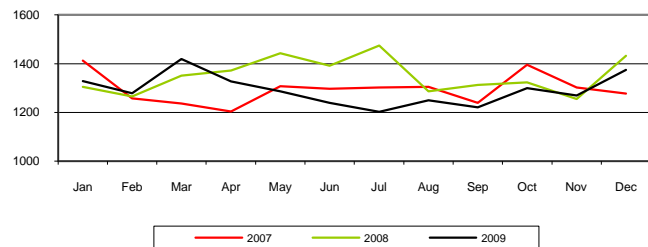
Elective under performance - 1.47 %

Non Elective over performance 3.8%

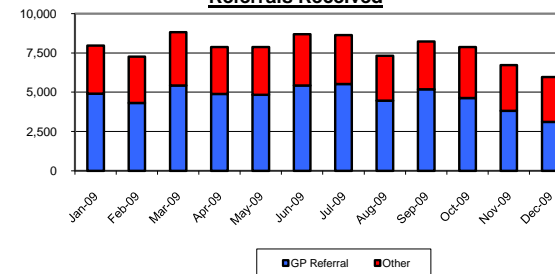
OP New over performance 3.71%

Follow up over performance 11.97%

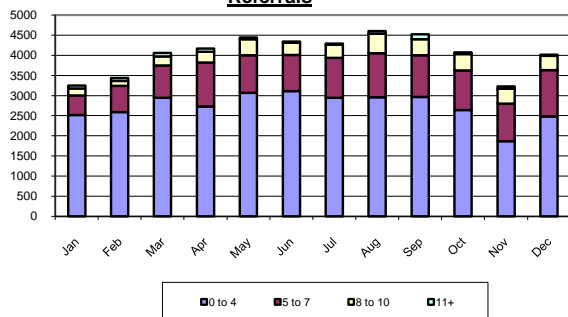
Emergency Admissions - 2007 to date



Referrals Received



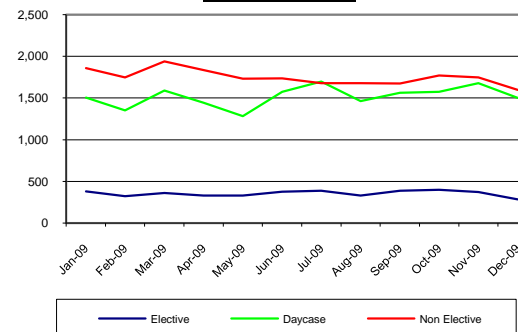
OP Waiting Times in weeks for GP / Dental Referrals



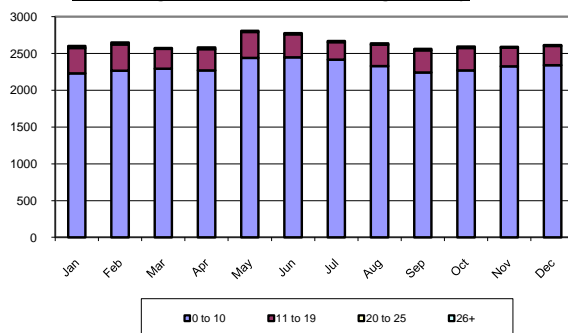
Monthly 18 WEEK Performance (unadjusted for December)



Number of FCEs



IP Waiting Times for active waiting list only



Key Issues

Cancelled Operation

Remains underachieved in December due to Consultant and Theatre sickness on the day . Unfortunately the performance in December now means our best case end of year position will be underachieved.

Cancer subsequent surgical procedure

All six elements for Cancer targets have been achieved in December. However we continue to fail Surgical subsequent when we assume a full year outturn position to date

C Diff - remains underachieved

Elective performance against SLA - Excellent progress has been made in reducing the elective backlog from April and May. This has reduced from -750 to -250 in the past two months and forms part of the Trust recovery plan. We have increased throughput mainly due to the improving day case rate which now stands at 84.2% our best performance to date along with greater focus on reallocating theatre sessions

New to follow up performance

We have seen some improvement in month as a result of several specialties reviewing follow up lists and reallocating follow ups to new patient sessions .