

Dye testing

Your doctor has requested that you have a **dye test**.

This is a procedure which gives the doctor more information about the blood circulation in the back of your eye. It will show up any abnormalities that are present in more detail. This allows us to make better decisions about your future treatment.

Prior to your test it is important to know:

- **Do you have any allergies?** It is important to know whether you are allergic to any drugs, or whether you react to eating certain foods (such as seafood).
- **Do you suffer from asthma?**
- **Do you suffer from high blood pressure?** If you have high blood pressure it is important to have it checked by your practice nurse prior to the dye test, otherwise you may find your test is cancelled on the day.

On the day of your test

You must not drive on the day of your test.

We will be **dilating** (enlarging) your pupils. You will be able to resume driving when your vision has returned to normal.

Your pupils can remain dilated for up to 36 hours.

You will be asked to sign a consent form if you have not already signed one. Please feel free to ask the nurse who will be carrying out the test any questions about the procedure.



Fundus camera

The test itself

We will insert a tiny tube (called a **cannula**) into one of your veins. This enables us to inject the dye into your bloodstream.

You will be asked to sit in front of the Fundus camera where we will take an initial series of photographs of your eye.

The dye will then be injected and a further set of photographs will be taken.

It is important that you follow the instructions given to you by the camera operator as it is vital that we get good quality images.

The photography session will last approximately fifteen minutes. You will then be asked to return to the waiting area.

You will be free to leave the hospital once you have been seen by the doctor, who will discuss your results with you.

You may require some laser treatment, so you must be prepared to remain in the hospital for approximately 5 hours. We will also need to remove the cannula from your arm before you go home.

Although allergic reactions are rare, some patients can develop a reaction to the dye, ranging from itching, a rash or difficulty breathing. **Please let us know if you feel unwell at any point.** You are most likely to experience this within the first hour after injection.

After the test, your skin will be yellow in colour and your urine will be fluorescent. This will last around 24 hours. Drink plenty of fluids to help flush the dye from your body.

If you have any questions about this procedure, please contact the eye clinic by telephoning the number on the back of this leaflet.



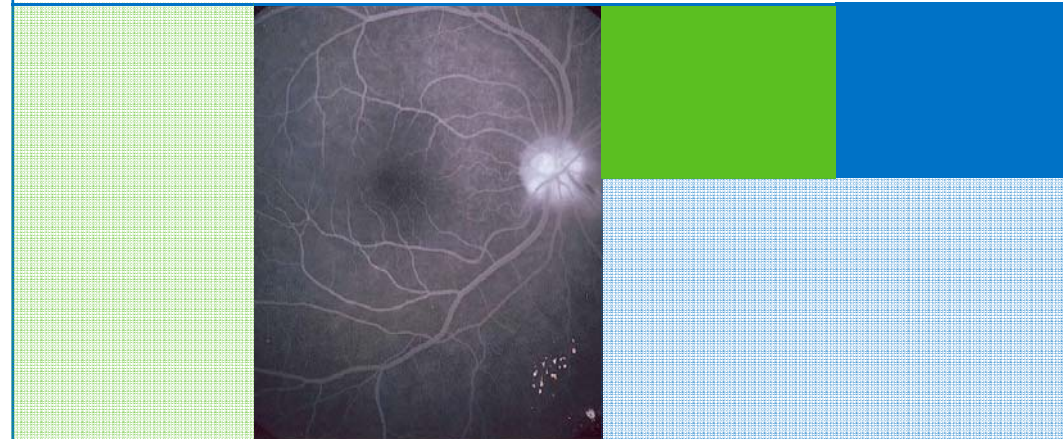
**Moorfields Eye Clinic
Bedford Hospital NHS Trust
Kempston Road
Bedford
MK42 9DJ
01234 792 643**

Bedford Hospital **NHS**
NHS Trust



Ophthalmology

Fundus Fluorescein Angiography Dye Test



Information for patients

Date of publication: October 2009
Date for review: October 2011
© Bedford Hospital NHS Trust